

Series: GA10

Gel Audio Transducer

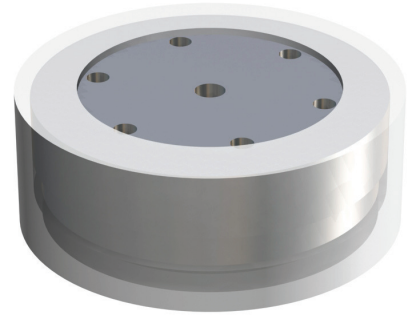
Model: GA10.1 (self adhesive bracket)

GA10.3 (no bracket)

The SFX Gel Audio transducer produces high quality sound when placed against a wide range of materials, including glass, plastics, metals, wood, composites and even some fibrous materials. When the SFX GA transducer is placed against a material that material becomes a loudspeaker. SFX Technologies has developed a Gel Audio Transducer design with its structure in permanent contact with a panel, without being bonded to it. The GA10 is low power mid to high frequency driver, intended for applications where space is at a minimum and high SPL is not required.

Features

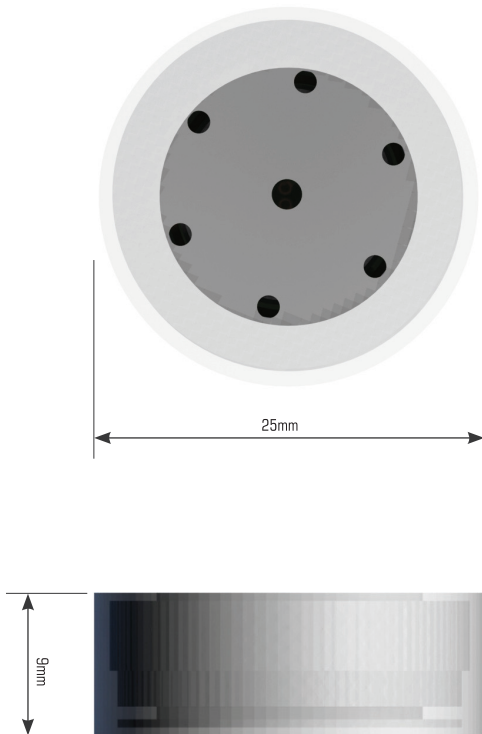
Sound Pressure Level	85 +/- 5dB at 1W/1m, at 1000Hz
Impedance	8 Ohms
Frequency Range	300-15000Hz (Related to surface being driven)
Power Handling	3 W (R.M.S)
Magnet	N45
Weight	20g (approx.)
Connector	Open wire ends



Applications

The GA10.2 is a bracket less driver to be fitted internally within a casing surround. Like conventional loudspeaker technology, the SFX GA transducer can be used to deliver sound in a variety of applications ranging from hi-fi and consumer electronics to in-car audio and architectural uses.

Dimensions



Performance Characteristics

